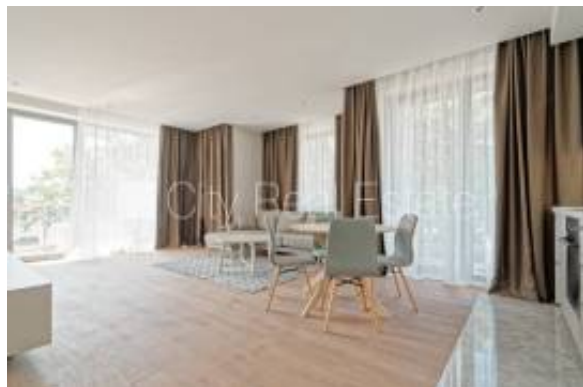




Apartment for rent in Jurmala, 78.80m²



Ügynök információ

Név:	City Real Estate
Cégnév:	City Real Estate
Ország:	Latvia
Experience since:	
Szolgáltatás típusa:	Vásárlás vagy eladás
Specialties:	
Property Type:	Apartments, Houses
Telefon:	+371 (67) 114-284
Languages:	English, Latvian
Weboldal:	https://www.cityreal.lv

Hirdetés részletei

Ár: EUR 1,500

Elhelyezkedés

Ország: Latvia
Cím: Vienibas prospekts
Feladta: 2024. 04. 25.
Leírás:

Latvia, Jurmala, Vienibas prospekts. Newly constructed building , well-maintained greened courtyard, indoor courtyard, precinct with metal wall, possibility to rent a parking place, underground parking place, entrance from street, entrance from courtyard, in a courtyard is available playground , greened area with new trees , luxury apartments , elevator, two terraces, windows are located on street side, air ventilation system, rooms isolated, studio type apartment, radiators with regulators, gas heating, purification filter for cold water, cold water counters, hot water counters, heating counters, independent calculation for heating, heating floor in bathroom , large show-windows, aluminum glass windows, outside doors made from steel, new plumbing, parquet flooring, flag flooring, bathroom with WC, shower stall, build in kitchen unit, built-in wardrobe, air conditioner, television, refrigerator, dishwasher, induction cooking, oven, washing machine, internet, cable TV set, day and night television surveillance , video door phone, twenty-four hours security, staircase doors under seven seals, for rent with all in pictures visible equipment, pillows, blankets, bedclothes, dishes , available, strategically beneficial location, price in the summer season - 3500.00 EUR, CITY REAL ESTATE ID - 510485

Gyakori

Kész négyzetméter: 78 nm
Floor Number: 2

Room details

Total rooms: 2



Lease terms

Date Available:

További információ

Weboldal URL:

<https://www.cityreal.lv/en/real-estate/op/510485>

Contact information

Telefon:

+371 29821409

IMLIX ID:

510485

