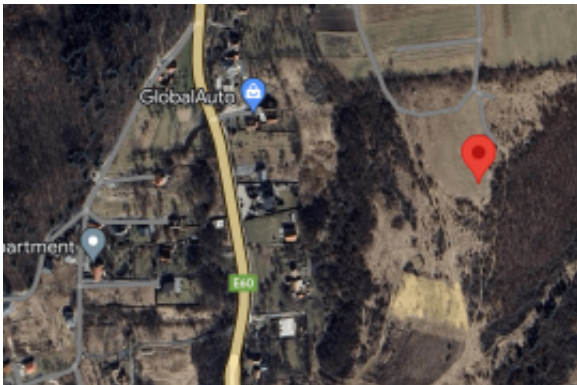




Excellent Plot of land for sale in Cluj



Agent Info

Naam: Niall Madden
Bedrijfsnaam: Esales Property Limited
Mistlampen: United Kingdom
Experience: 2002
since:
Service Type: Selling a Property
Specialties:
Property Type: Apartments
Telefoon:
Languages: English
Website: <https://esalesinternational.com>

Advertentie details

Vastgoed voor: Koop
Prijs: USD 108,311.84

Locatie

Aanbevolen Auto Onderdelen: Romania
Adres: PJ2C+RFeleacu
Postcode: 400872
Geplaatst: 04-07-2024
Omschrijving:
Excellent Plot of land for sale in Cluj Romania

Esales Property ID: es5554217

Property Location

Feleacu

407270,

Cluj,

Romania

Property Details

Unveiling Your Transylvanian Sanctuary: 2200 sqm of Unspoiled Beauty Awaits



Imagine waking up to the crisp mountain air, sunlight filtering through the surrounding forest, and a breathtaking panorama stretching out before you. This dream can become your reality with this exceptional 2200-square-meter plot of land, nestled atop a scenic hill in Cluj, Transylvania, Romania.

A Haven of Untamed Nature

This unique property offers an opportunity to escape the ordinary and immerse yourself in the raw beauty of the Transylvanian landscape. The land remains uncultivated, a pristine canvas waiting for your vision. Imagine gazing out from the highest point of your property, taking in the expansive vista of rolling hills and dense forests. The gentle murmur of nature becomes the soundtrack of your life, a constant reminder of the tranquility that surrounds you.

A Gateway to Adventure

This idyllic location places you within walking distance of captivating natural reserves. Explore hidden trails teeming with diverse flora and fauna, lose yourself in the serenity of ancient woodlands, and reconnect with the invigorating power of nature. For those seeking a taste of adrenaline, renowned ski resorts lie within easy reach, offering thrilling slopes and breathtaking winter scenery. Imagine carving fresh powder on a crisp winter day, surrounded by the majestic Carpathian Mountains.

Urban Convenience Meets Rural Charm

Despite its secluded feel, the property boasts surprising accessibility. Cluj-Napoca, a vibrant city brimming with culture and history, is just 5 kilometers away, a mere 10-minute drive. Here, you'll find a wealth of amenities, from world-class restaurants and charming cafes to museums overflowing with local treasures. Enjoy a captivating performance at the Cluj-Napoca National Theatre or delve into the city's rich past at the Banffy Palace. The perfect balance between urban convenience and rural tranquility awaits.

A Playground for Outdoor Enthusiasts

For the adventurous soul, a network of well-maintained hiking routes lies at your doorstep. Lace up your boots and embark on challenging climbs or leisurely strolls, each turn revealing a new vista and a deeper connection with the surrounding landscape. On hot summer days, cool off in a refreshing outdoor pool, a perfect escape from the midday sun. Stargazers will be delighted with the property's proximity to the nearest astronomical observatory, just a 10-minute journey away. Imagine spending evenings peering into the cosmos, marveling at the vastness of the universe.

A Canvas for Your Dreams

The development possibilities associated with this land are truly exciting. With its generous size and strategic location, the property presents a unique opportunity to create a haven that reflects your vision. Imagine building a luxurious chalet nestled amidst the trees, a cozy cabin perfect for weekend getaways, or a sprawling estate that seamlessly blends modern amenities with the timeless beauty of the natural world. The possibilities are endless, limited only by your imagination.



Beyond the Property Line

The excellent access to national roads ensures seamless travel throughout the region. Explore charming towns and villages scattered across Transylvania, each boasting a unique character and rich history. Venture further afield and discover the captivating beauty of Romania, from the dramatic peaks of the Carpathian Mountains to the enchanting castles that dot the landscape.

Owning a Piece of Transylvania

This exceptional property is more than just a plot of land; it's a gateway to a life filled with peace, adventure, and endless possibilities. Imagine waking up each morning to a breathtaking panorama, spending your days exploring the wonders of nature, and returning to your tranquil haven under the starlit sky. Contact the agent today and take the first step towards making your dream Transylvanian sanctuary a reality.

About the Area

Nestled amidst the rolling foothills of the Carpathian Mountains lies Cluj-Napoca, the unofficial capital of Transylvania, Romania. This vibrant city boasts a rich tapestry of history, culture, and youthful energy, making it a captivating destination for travelers and residents alike. Cluj-Napoca's story stretches back centuries, with remnants of Roman, Hungarian, and Saxon influences evident in its architectural gems. Stroll through the charming city center and marvel at the Gothic spires of St. Michael's Church, a masterpiece of medieval architecture. Wander through the baroque Banffy Palace, now a treasure trove of Romanian art, and lose yourself in the fascinating exhibits that showcase the region's artistic heritage.

Beyond its historical significance, Cluj-Napoca pulsates with a modern verve. The city is home to a thriving university population, creating a dynamic and youthful atmosphere. Cobblestone streets lined with trendy cafes and lively bars beckon exploration, while a diverse culinary scene caters to every palate. From traditional Romanian fare to international cuisine, Cluj-Napoca offers a gastronomical adventure waiting to be discovered. For a dose of contemporary culture, explore the city's vibrant art scene. Independent galleries showcase the works of local talents, while museums like the Cluj-Napoca Art Museum delve into the artistic legacy of Romania and beyond.

Cluj-Napoca offers more than just urban delights. Step outside the city limits and discover the breathtaking beauty of the surrounding Transylvanian landscape. Lace up your hiking boots and explore the scenic trails that weave through the nearby Făgăraș Mountains, or embark on a cycling adventure through rolling hills and charming villages. Nature enthusiasts can delve into the mysteries of the nearby Cheile Turzii Natural Reserve, a dramatic gorge carved by the Turzii River, or visit the tranquil Belis Lake, a haven for relaxation and stunning vistas.

Whether you're a history buff seeking to delve into the past, a culture vulture craving artistic experiences, or an outdoor enthusiast yearning for natural beauty, Cluj-Napoca has something to offer everyone. This captivating city serves as the perfect base for exploring the wonders of Transylvania, offering a unique blend of historical charm, modern energy, and breathtaking scenery.



Main Features

- * 2200 m2 of land for development
- * Excellent location close to many amenities
- * Stunning views.
- * Huge Potential in the rental market if developed on.

Contact us today to buy or sell your property in Romania fast online.

Algemeen

Lot Afmeting: 2200 m²

Lease terms

Date Available:

Additionele informatie

Virtual tour URL: https://www.youtube.com/embed/pyB2IDpV1Fs?version=3&rel=1&showsearch=0&showinfo=1&iv_load_policy=1&fs=1&hl=en-GB&autoplay=2&wmode=transparent

Contact information

IMLIX ID: IX5.887.441

