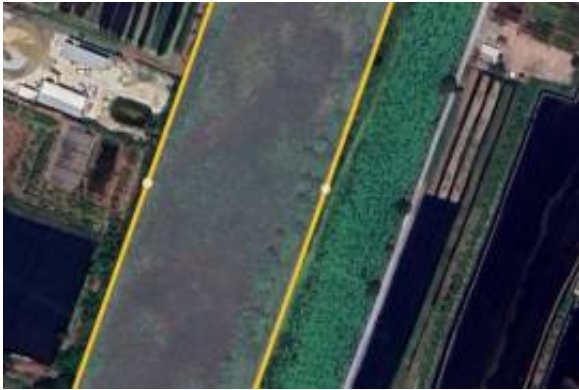




## Excellent Plots of land for sale in Chang Wat Nonthaburi



### Agent Info

Name: Niall Madden  
Company: Esales Property Limited  
Name:  
Country: United Kingdom  
Experience since: 2002  
Service Type: Selling a Property  
Specialties:  
Property Type: Apartments  
Phone:  
Languages: English  
Website: <https://esalesinternational.com>

### Listing details

Property for: Sale  
Price: EUR 7,600,000

### Location

Country: Thailand  
State/Region/Province: Nonthaburi  
Address: Rural Road Nonthaburi Tambon Ban Mai  
ZIP code: 11140  
Posted: Aug 10, 2023

Description:  
Excellent Plots of land for sale in Chang Wat Nonthaburi Thailand

Esales Property ID: es5553830

### Property Location

3 Rural Road Nonthaburi 3102, Tambon Ban Mai,  
Amphoe Bang Yai,  
Chang Wat Nonthaburi  
11140,  
Thailand

### Property Details

Here we present an excellent plot of land in one of the most sought after areas for development right now in Thailand.



A plot of land consists of 9 pieces of land combined, making up 41,960 sqm +/-.  
Ideal for huge houses, townhouses or commercial property etc.  
It is just 4km off near Thailand's renowned Mahidol University.

## About the Area

Bang Yai is a district in the western part of Nonthaburi province, central Thailand. Nonthaburi is a heavily populated central Thai province that lies northwest of Bangkok, in the Chao Phraya River basin. In the east, the small river island of Ko Kret is known for its artisanal pottery and Wat Poramaiyikawat museum, containing Buddhist relics, porcelain and crystalware. Farther south along the river, the Wat Chaloem Phra Kiat temple is a royal monastery decorated with mirrors and mosaics.

The history of Nonthaburi dates back 400 years to the era of Ayutthaya Kingdom. Firstly known as Tambon Ban Talad Khwan, and noted for its fertile soil and plentiful water where a lot of orchards nest alongside the Chao Phraya River, this tambon was promoted to Nonthaburi City in 1549 under the reign of King Mahajakrapat.

In 1665, King Narai the Great had noticed that the river has changed its own route and it might consequently have a negative effect to the city's security. Hence, the fortifications have been established at the delta of Om River where the city pillar has been built as the symbol of the new foundation of Nonthaburi.

At the time of Rattanakosin Kingdom, King Mongkut has had Nonthaburi moved to the entrance of Bang Sue Canal in Tambon Ban Talad Khwan where later in the reign of King Chulalongkorn, the city hall has been founded and lasted till 1928. In the same year, King Pokklao has initiated the idea of building a new city hall at Rajawiththayalai Ban Bang Khwan, Tambon Bang Tanowsri on Pracharaj I road alongside the Chao Phraya River which nowadays belongs to the Ministry of Interior Affairs. The building, constructed in a European style, has become a relict of Thailand while the current city hall is situated on Rattanathibet Road.

Nonthaburi is situated in a fertile basin on the bank of the Chao Phraya River, where many fruit and flower plantations are interspersed with a number of Historical temples. The town is only 20 km from Bangkok and is conveniently accessible by road or river.

## Main Features

- 41960 m2 of land for development
- Excellent location close to many amenities
- Stunning views.
- Huge Potential in the rental market if developed on.

Contact us today to buy or sell your property in Thailand fast online.



## **Common**

Lot Size: 41960 sq m

## **Lease terms**

Date Available:

## **Additional information**

Virtual tour URL: [https://www.youtube.com/embed/ocrvmxXYGvI?version=3&rel=1&showsearch=0&showinfo=1&iv\\_load\\_policy=1&fs=1&hl=en-GB&autoplay=2&wmode=transparent](https://www.youtube.com/embed/ocrvmxXYGvI?version=3&rel=1&showsearch=0&showinfo=1&iv_load_policy=1&fs=1&hl=en-GB&autoplay=2&wmode=transparent)

## **Contact information**

IMLIX ID: IX4.750.024

